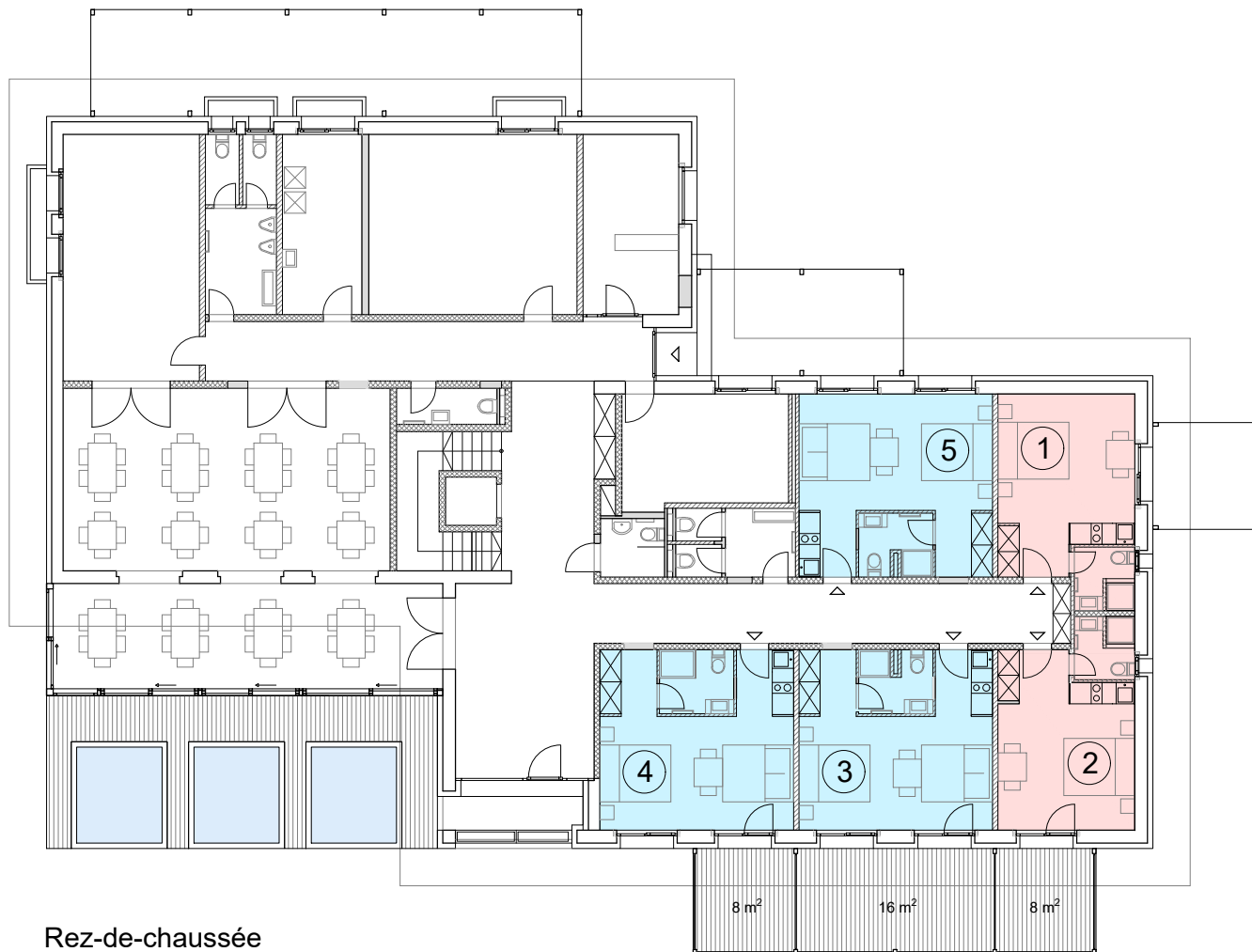


# Transformation d'un hôtel / Leukerbad

Echelle 1/100

Appartement 1 - Type 01 - Surface brute	= 25 m <sup>2</sup>
Surface nette	= 21.5 m <sup>2</sup>
Appartement 2 - Type 01 - Surface brute (y.c. terrasse)	= 29 m <sup>2</sup>
Surface nette	= 21.5 m <sup>2</sup>
Appartement 3 - Type 02 - Surface brute (y.c. terrasse)	= 40 m <sup>2</sup>
Surface nette	= 27.5 m <sup>2</sup>
Appartement 4 - Type 02 - Surface brute (y.c. terrasse)	= 36 m <sup>2</sup>
Surface nette	= 27.5 m <sup>2</sup>
Appartement 5 - Type 02 - Surface brute	= 32 m <sup>2</sup>
Surface nette	= 28 m <sup>2</sup>



Rez-de-chaussée